

# The American Bobtail Breed Group welcomes you



It all began with.. Yodi, son, & others

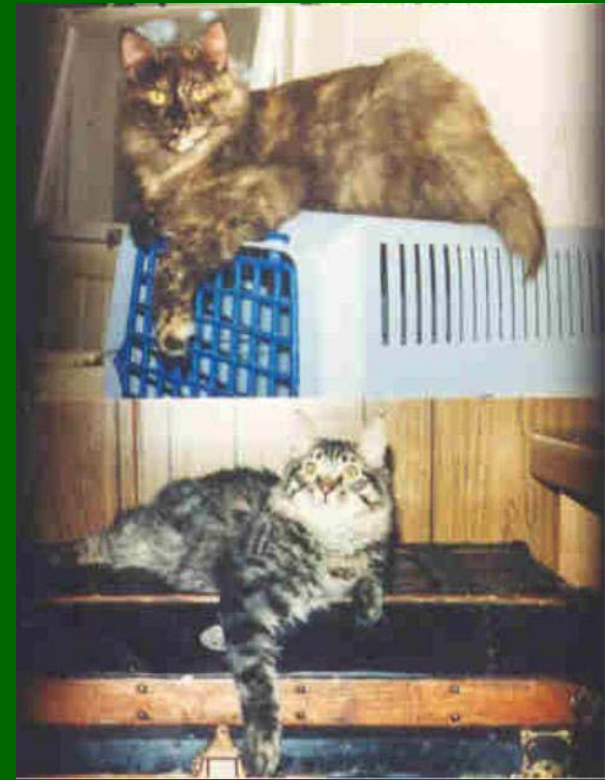


# American Bobtail from the past





# More of our foundation cats



# Summary of AmBob Breed Seminar

We will cover:

- General description
- Distribution of points
- Features, allowances, penalties

We hope this seminar accomplishes the following objectives:

- Describe and use the TICA standard
- Recognize excellent examples of American Bobtails

We ask that you help us by asking questions as they arise.

# American Bobtail - Distribution of Points

**this new point distribution goes into affect May 1, 04**

## **Head (40)**

Shape 5

Ears 4

Eyes 8

Chin 7

Muzzle 7

Profile 6

Nose 3

## **Body (40)**

Torso 10

Legs 5

Feet 3

Tail 10

Boning 7

Musculature 5

## **Coat/Color (15)**

Length 3

Texture 5

Pattern/Color 5

## **Other (5)**

Balance 5

Condition 2

# American Bobtail - *General Description*

The American Bobtail is a medium to large naturally occurring short-tailed cat which is a product of natural selection. It is a hearty breed that has all the intelligence and skill that nature demands of her creatures.



## *General Description - cont.*



The Bobtail displays the look of an athletic animal, well muscled and solid, with the appearance of power. The breed should also be noted for an exceptional disposition and adaptability.

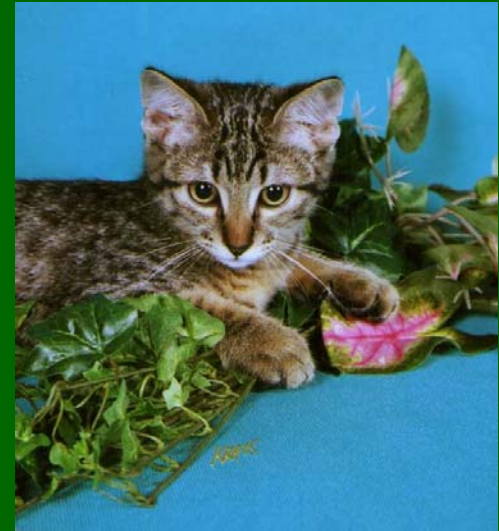


# American Bobtail - *Head*

**Shape:** Broad modified wedge with gently rounded contours, without noticeable flat planes or doming. Size in proportion to the body.



# Incorrect Head Shape



# American Bobtail - *Head cont.*

**Ears:** Medium to moderately large with slightly rounded tips and wide at the base. Placement should be as much on the top of the head as the side, following the shape of the wedge. Lynx tipping, furnishings and ocelli markings are desirable. Ears may appear pointed when lynx tipping is present.



# Incorrect ears



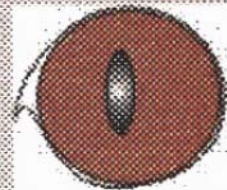


## American Bobtail - *Head cont.*

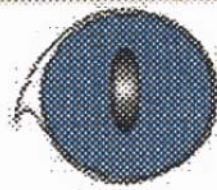


**Eyes:** Large, wide, almost almond in shape.  
Set on a slight bias.

## Basic Eye Shapes



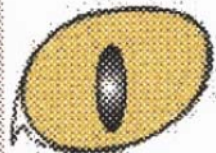
Round



Almost Round



Almost Oval



Oval



Large Oval



Almost Almond



Almond



Large Almond



Lemon

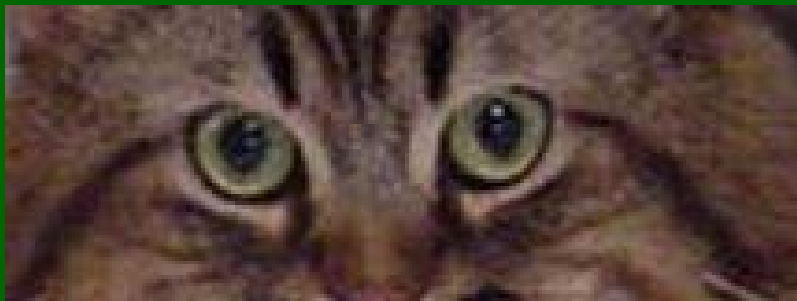
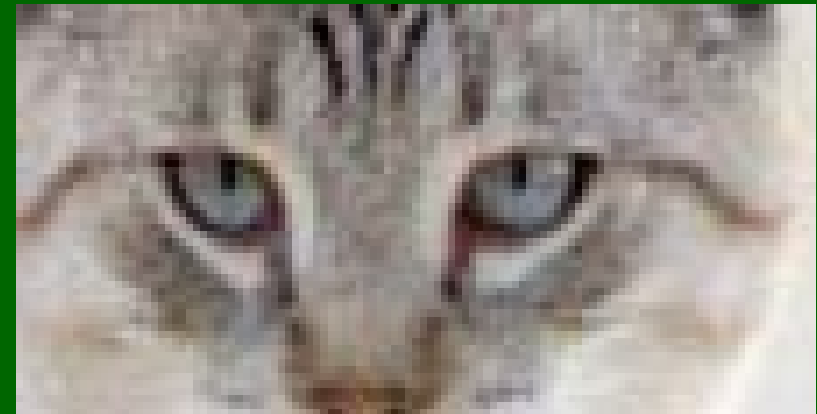
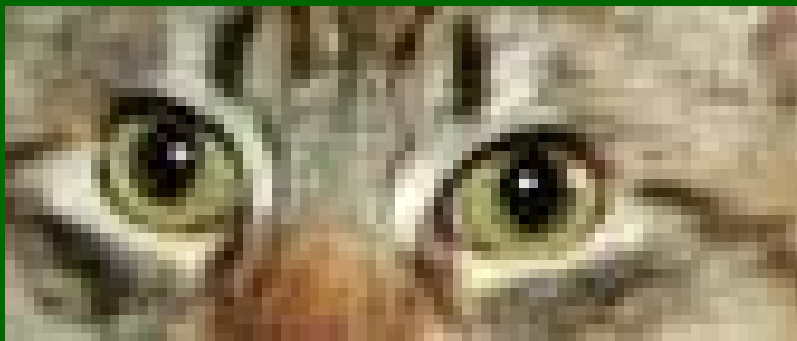
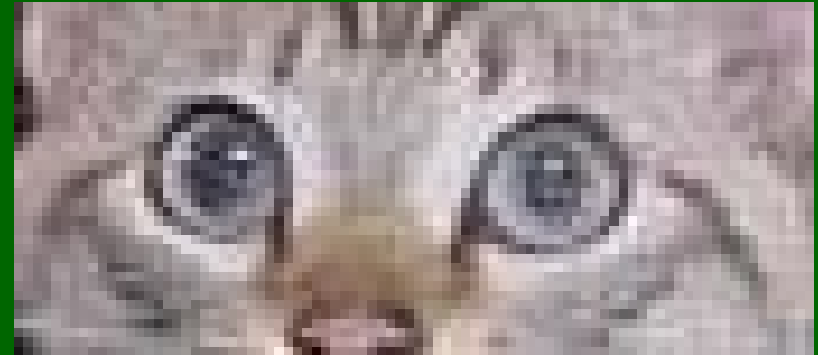
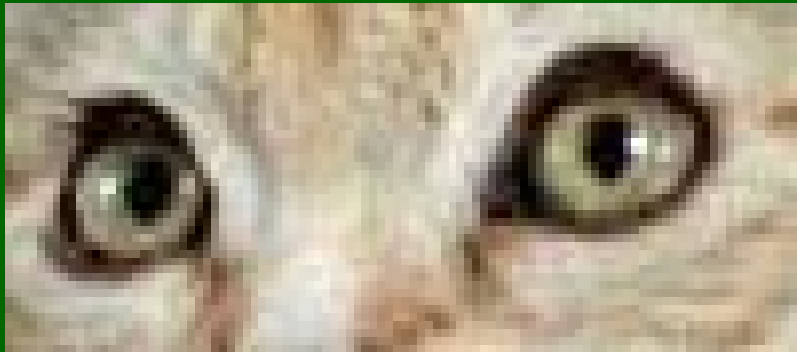


Peach pit



Walnut

# Incorrect Eye



# American Bobtail - *Head cont.*

**Chin:** Full, in alignment with the nose when viewed in profile.





# Incorrect Chin



## American Bobtail - *Head cont.*

**Muzzle:** Should be almost as long as wide. Slight whisker break at well defined cheeks with full whisker pads, appears blunt when viewed in profile.



# Incorrect Muzzle



## American Bobtail - *Head cont.*

**Nose:** Wide, gently curved.





## American Bobtail - *Head cont.*



**Profile:** Gentle  
concave curve  
between nose  
and brow.



## American Bobtail - *Head cont.*

**Neck:** In proportion to body, may appear short due to musculature.



# American Bobtail - *Body*

**Torso:** Slightly longer in body than legs are tall. Muscular and athletic in appearance. Depth of flank. Back is to be straight, higher in hips



## American Bobtail - *Body cont.*

**Legs:** In proportion to the body.

**Feet:** Large and round. Toe tufts are desirable in longhairs.





# American Bobtail - *Body cont.*

**Tail:**, Short with a minimum length of 1" actual bone.

Tail should not extend past the hock





# Incorrect Tail





# American Bobtail - *Body cont.*

**Boning:** Heavy.

## **Musculature:**

Substantial and firm.  
Males are heavily built with a muscular appearance.  
Females may be smaller and more feminine.





# American Bobtail - *Color/Coat/Pattern*

**Length:** *BH*,  
medium short,  
stands slightly away  
from the body. Hair  
may be slightly  
longer on belly.

**Texture:** Resilient,  
all weather.

**Pattern/Color:** All  
patterns & colors  
allowed.



## *Color/Coat/Pattern cont.*

**Length:** *BB*, Medium long, shaggy. Slightly longer hair on ruff, britches, belly and tail. Mutton chops preferred with long hair. Seasonal variations of coat should be recognized. Again all patterns and colors allow.



# We do have color/patterns





## American Bobtail - *Other*

**Balance:** Muscular and well proportioned. Tail not too short or overly long as to affect the natural balance of the cat. Excellence in one aspect is not to offset deficiency in another.

**Condition:** Overall impression should be that of an alert, active, and athletic cat in superb condition.



# American Bobtail - *Allowance*



- Although straight tails are ideal, tail may be slightly knotted or kinked and also may be curled or hooked at the end, as long as the tail remains flexible where attached to the body. Ghost markings in lynx points, tarnishing on silvers as well as lockets and buttons on tabby patterns. Breed slow to mature, 2-3 years. Jowling in older males



# American Bobtail - *Penalize*

Tail overly long, past the hock, or too short, less than 1".

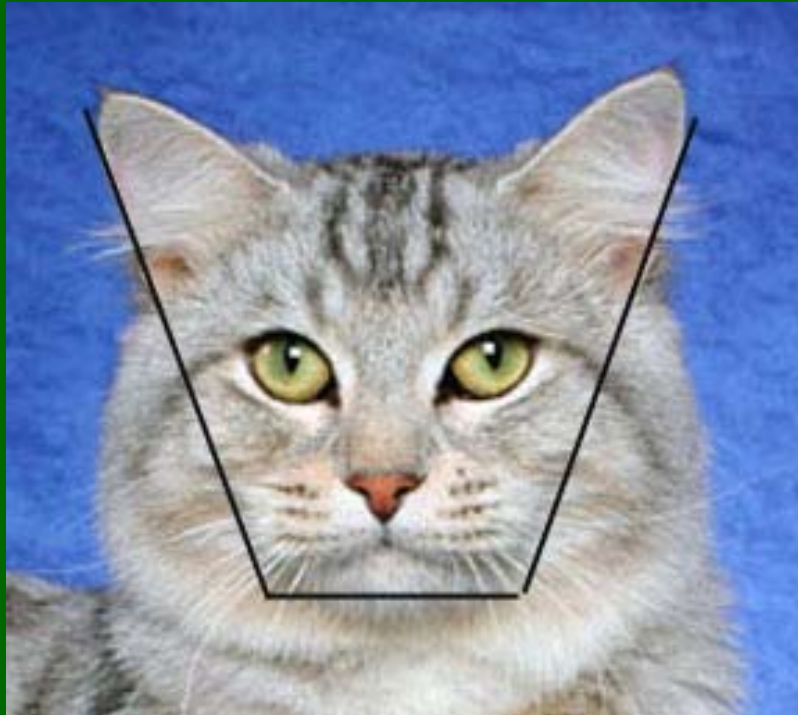
## **Withhold all awards:**

Evidence of illness, poor health, and emaciation. No tail, full length tail, or docked tail.

# American Bobtail vs Pixie Bob

Many ask how these two breeds are different. We will visually show these differences.

American Bobtail  
modified wedge



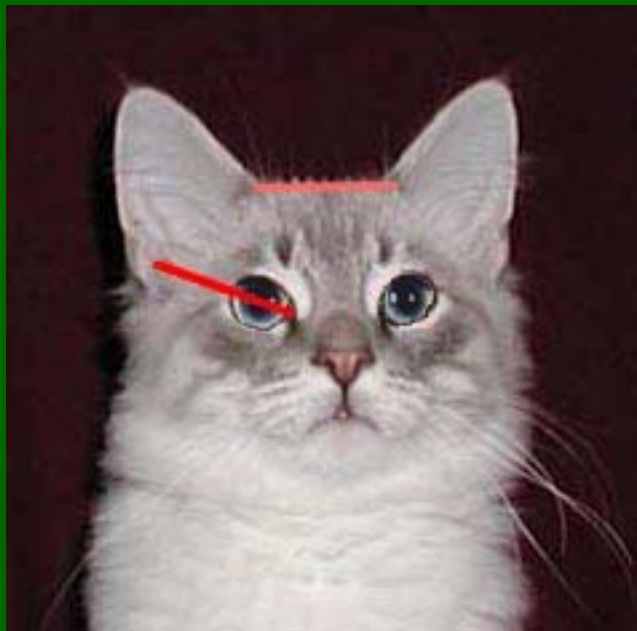
Pixie Bob  
inverted pear



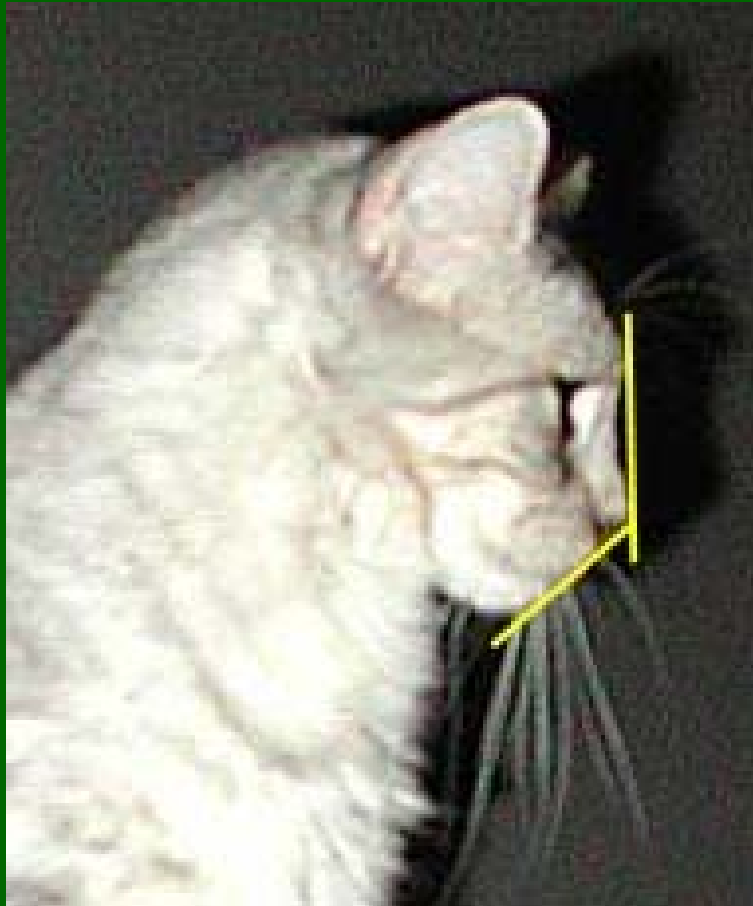
American Bobtail

Pixie Bob

EYES



# American Bobtail PROFILES



# Pixie Bob





# American Bobtail Topline



# Pixie Bob





Thank you